



# COLD FEAR

Never take the shortcut.

- George Donner - 1847







A close-up, high-contrast photograph of a person's face, focusing on the eyes and forehead. The person has light-colored eyes and dark hair. Several small, bright red blood splatters are visible on the forehead and around the eyes, suggesting a violent or traumatic event. The lighting is dramatic, with deep shadows and bright highlights.

# CONTENTS

The Story

The Cast

Production Team

Executive Summary

Comparables

Appendix



# THE STORY

A young couple, Neyeli and Jacob are on an annual camping trip in the mountains when the weather begins to turn unseasonably bad. While on their way to a Cabin, Jacob decides to take a short cut through an unmarked road with an open gate.

The conditions worsen and Jacob ends up skidding out on a hairpin turn, launching the small car over the edge. The car finally comes to rest in the valley below but the young couple are knocked unconscious.

Waking up hours later, they realize that Jacob is pinned inside the wreckage. When Neyeli is finally able to free him, they discover that the ragged metal had, in fact cut an artery and him being pinned kept the wound sealed. They manage to staunch the blood in the nick of time.

The struggle to survive and get rescued is real. They spend several nights in the car in white out conditions, subsisting on melted snow and road snacks. Finally there's a break in the weather, and Neyeli digs herself out and tries to climb to the road. While she's out there the blizzard kicks up and she gets separated from the car.

Meanwhile, back in the normal world, their friends Jackie and Maddie, who have been waiting for them, have enlisted the help of the sheriff and park rangers to find the couple. The weather is too bad for an aerial search so, they bide their time by putting up posts on social media and contacting the press.

Neyeli finds her way back to the car and Jacob only to be attacked by a hungry Grizzly in the small hours of the morning. Jacob is further injured but survives the encounter. Neyeli brings him back to camp and tries in vain to nurse him back to health.

While she is out trying to pull together enough supplies for a fire, Jacob succumbs to his wounds and dies. After giving up from despair, Neyeli hears a plane in the distance and it motivates her enough to push through and get a signal fire going.

The plane fades and she is unsure if it saw her signal. She is mentally and physically at the end of her rope. She hallucinates that Jacob is still alive and even goes far enough to cut a chunk off of his leg to eat in order to survive. She tries but she can't do it and succumbs to bitter exhaustion.

She wakes in a comfy bed in a warm and inviting cabin. Her rescuer is Ron Woodcock, a local outdoor enthusiast and organic farmer. He nurses her back to health for a week and soon regales her with his odd fascistic philosophy. Once it becomes clear that she is very uncomfortable and would like to leave, he drugs her.

She wakes in a basement strapped to a table. Ron is a cannibal and serial killer. She endures several days in a drugged haze as he meticulously removes her appendages. She finally manages to escape and in the ensuing chase through the snow, Ron gets attacked by the same Grizzly bear and Neyeli makes it to the rescue chopper.





# THE CAST

NAYELI



AMBER MIDTHUNDER



JONNY SEQUOIA



DEVERY JACOBS



ANSEL ELGORT



SKYLAR GISONDO



HARRY STYLES



JACKIE



PAULINA NGUYEN



KAREN FUKUHARA



PARIS BERELC



SIMONE ASHLEY

MADDIE



JESSE PLEMONS

RON WOODCOCK



JON BERNTHAL



ALEXANDER SKARSGÅRD

COLD FEAR

WOLFDRAGON FILMS, LLC



# PRODUCTION TEAM

## JESSE RANDELL WRITER / PRODUCER

Jesse Randell is a producer, writer and composer based in Oakland, California. He spent his formative years in Albuquerque, NM and has since been actively performing and producing over the past 25 years in the San Francisco Bay Area.

Jesse has an MFA in music and has since produced several albums and music videos for bay area projects. He is a founding member of a New Orleans style brass band : Blue Bone Express, who have been performing and recording for the past 18 years. He has also produced several albums with them, and co-produced their music video for the song 'Shufflin' the Deck'. Jesse has co-produced and music directed dozens of stage musicals from Legally Blond, to Oklahoma.

## DAMIAN DRAGO DIRECTOR / PRODUCER

Damian Drago is a Producer, Director, a Writer, a multi-talented post film & TV professional and film editor. His career began over 15 years ago while shooting and editing live in-store performances at Amoeba Music in Hollywood, while acting, writing features & directing short films.

He's known for editing films like *The Curse of Sleeping Beauty* for Bleiberg Entertainment, along with being a fixer editor on the cult hit *Necromentia for Compound B*, and the reboot of George Romero's horror classic *Day of the Dead: Bloodline*.

Damian's abilities go far beyond just editing, he is also a post production/visual effects supervisor, and has completed over 2500 visual effects composites on feature films like the *The Free Fall* and *Hereditary* among many others, along with the TV and Streaming shows like the breakout Hulu/Blumhouse horror anthology series *Into the Dark*, and the acclaimed Netflix hit *Midnight Mass*.

## WOLFDRAAGON FILMS PRODUCERS

Wolfdragon Films is a California limited-liability company which formed in 2017 to develop and produce unique and nuanced films. Over the next four years, the company plans to produce eight independently financed feature films with budgets between \$2 million and \$15 million.

In recent years, the film market has become more open to independent films that feature outstanding storytelling, projects with strong themes, such as *Lady Bird* and *Get Out* have led the way and prove that there is a market.





# EXECUTIVE SUMMARY

## THE STORY

After a camping trip car accident, a social media influencer embarks on a nightmare journey to survive blizzards, starvation, and amputation before a cannibalistic serial killer rescues her for his dark harvest.

## THE CAST

The Production Team is in the process of securing letters of Intent (LOI) for the lead roles of NAYELI, JACOB and RON. Letters of Intent from strong character actors are being pursued through agency packaging for the various supporting roles, with talent across the board being sought for both bankability and marketing awareness. Details on talent being approached can be found in the Cast section of this plan.

## FINANCING

The financial requirement for this plan is \$2 million. \$1.5 million will provide for the development, production, and post-production deliverables for the film. The structure allows for both a traditional distribution path of an acquisition deal as well as a self-motivated release strategy of the film this plan.



## SALES

The Production Team is in discussions to attach strong international sales representation to present Cold Fear globally at major film markets.

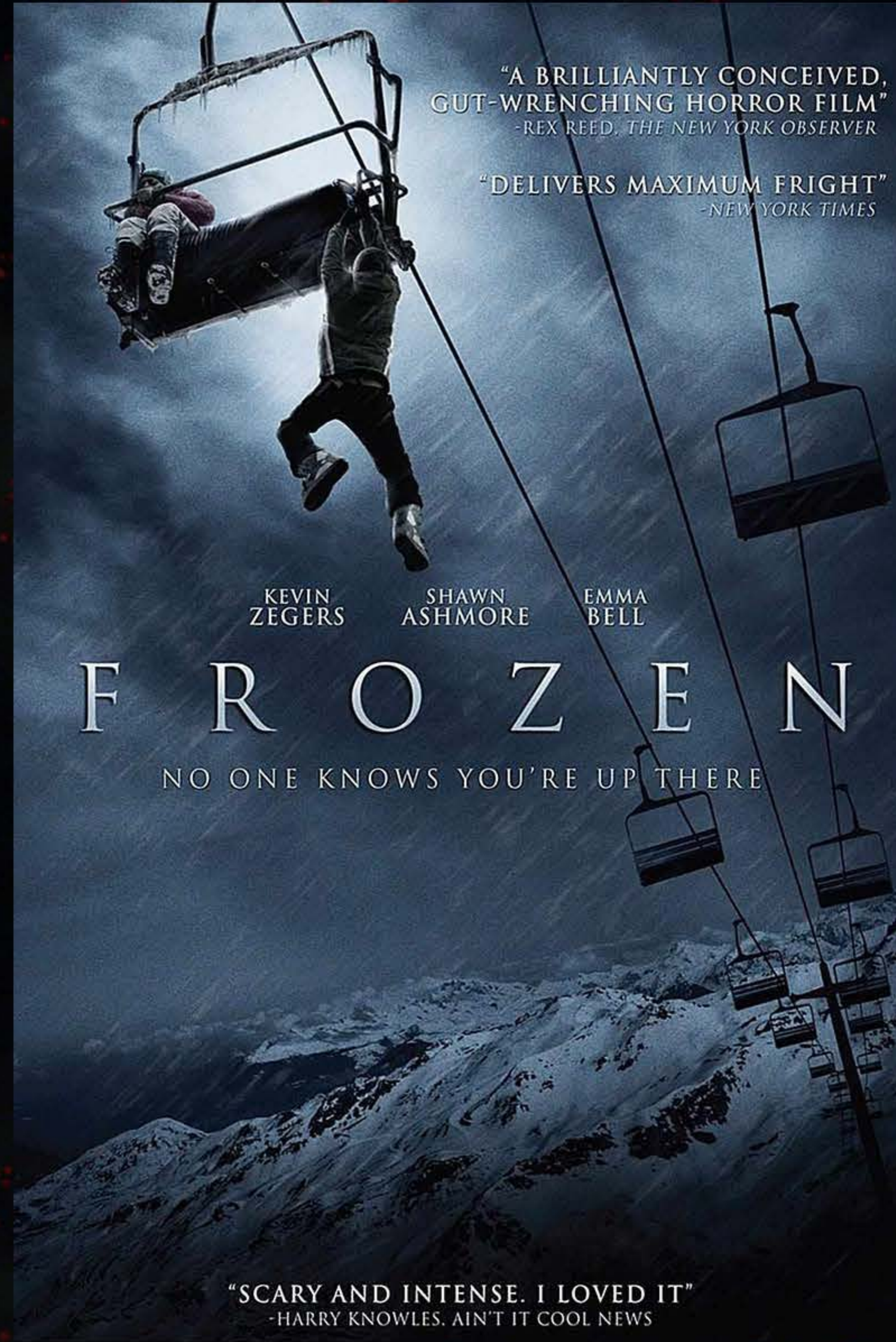
Advising on the content presentation, casting, marketing, and sales positioning, Cold Fear can avoid the typical pitfalls of indie sales.

The budget for the proposed film has been designed with the financial return in mind. The return strategy is based on a practical plan for accessing traditional horror markets.

Additionally, The Production team will target sophisticated audiences that recognize the value of a new horror film, filled to the brim with engaging characters, action and gore. Limited theatrical, New Media, Video on Demand (VOD) for internet and cable, DVD/blu-ray, broadcast, and foreign distribution outlets will be pursued—each with specific intent.



# COMPARABLES



## FROZEN

Budget: ≥\$2.6 million

Box Office: \$48 million



## THE DESCENT

Budget: \$3.8 million

Box Office: \$57.1 million



## WRONG TURN('21)

Budget: \$3.5 million

Box Office: \$4.8 million



#### Appendix A - LLC Registration

As development can be a time-consuming process, it is customary for the company documentation to be filed when the first subscription agreements are submitted. Procedures and timeline for company registration are outlined in the High Adventure, LLC Confidential Private Offering Memorandum according to applicable law. The full Operating Agreement is included with the offering memorandum and is available upon request. All company registration and documentation will be provided before escrow is established and will be available to investors before suitability is determined.

#### Appendix B - Wire Information

Wire information is available to qualified investors.

#### Appendix C - Legal Notices

This business plan does not constitute an offer to sell or a solicitation of an offer to buy any security or interest of any kind in the company or other entity herein.

No representations or warranties of any kind whatsoever are made, or should be inferred, with respect to the information set forth herein.

This business plan represents the confidential and proprietary work product of High Adventure and is not intended for general use or publication.

Consummation of the undertaking described in this business plan is subject, in pertinent part, to the company obtaining the funds necessary to finance the venture.

This business plan contains certain information and assumptions which are presented solely for the purpose of information and illustration.

No representations or warranties of any kind can be made as to the accuracy or completeness of such information.

#### Appendix D - Additional Information

Budget, Schedule, and Screenplay are available upon request.